

The background of the slide is a detailed portion of Leonardo da Vinci's 'L'Adorazione dei Magi' (The Adoration of the Kings). The scene is set in a dark, cavernous space with a large, gnarled tree on the right. In the foreground, the infant Jesus lies on a dark cloth, surrounded by the Virgin Mary and the three kings. The lighting is dramatic, highlighting the figures against the dark background. The overall mood is solemn and intimate.

Liceo "ARCHITA" - TARANTO

Incontro informativo per l'orientamento

Storia dell'Arte e Disegno

lunedì 18 gennaio 2021

SEGNO E DISEGNO

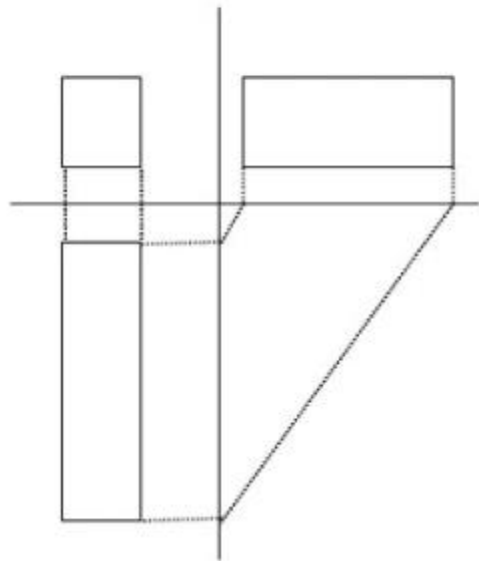
Prof. Paolo D'AMELIO

Il Disegno Tecnico come strumento di rappresentazione nella Storia dell'Arte

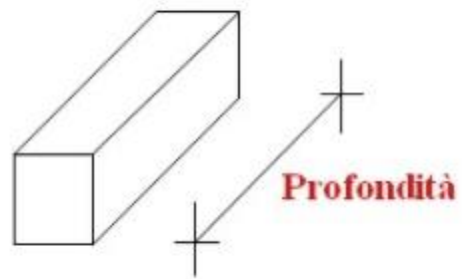
Leonardo Da Vinci, L'Adorazione dei Magi (particolare) - Firenze, Galleria degli Uffizi

Disegnare lo spazio e gli oggetti in tre dimensioni

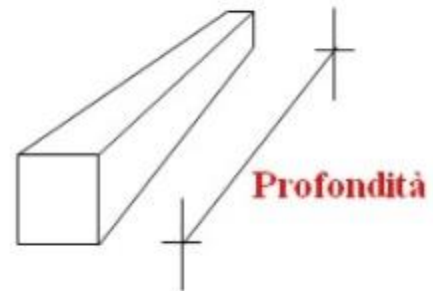
Proiezioni Ortogonali



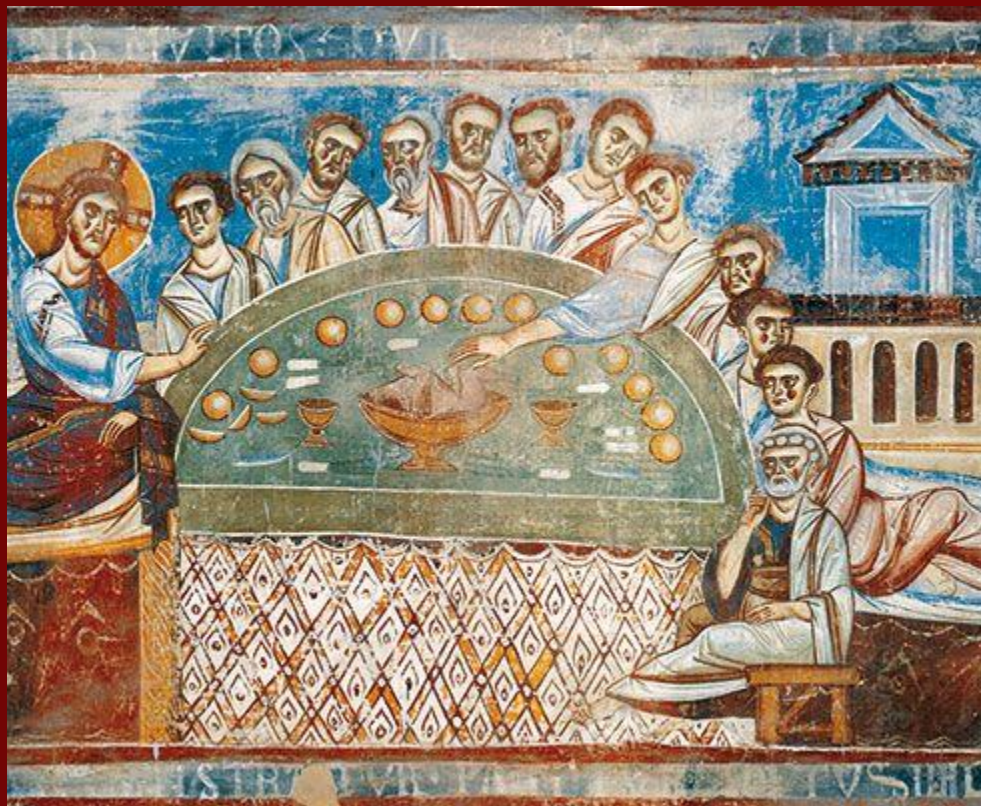
Assonometria



Prospettiva



Lo spazio nella Pittura



"Ultima Cena" - Capua, Chiesa di Sant'Angelo in Formis



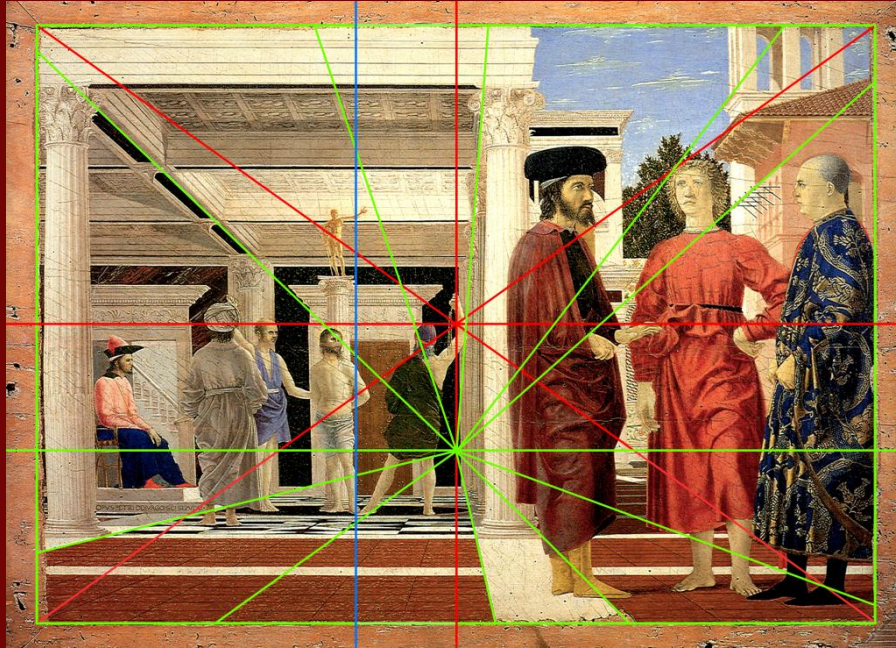
"L'Imperatrice Teodora ed il suo seguito" - Ravenna, Chiesa di San Vitale

Piero della Francesca

Masaccio

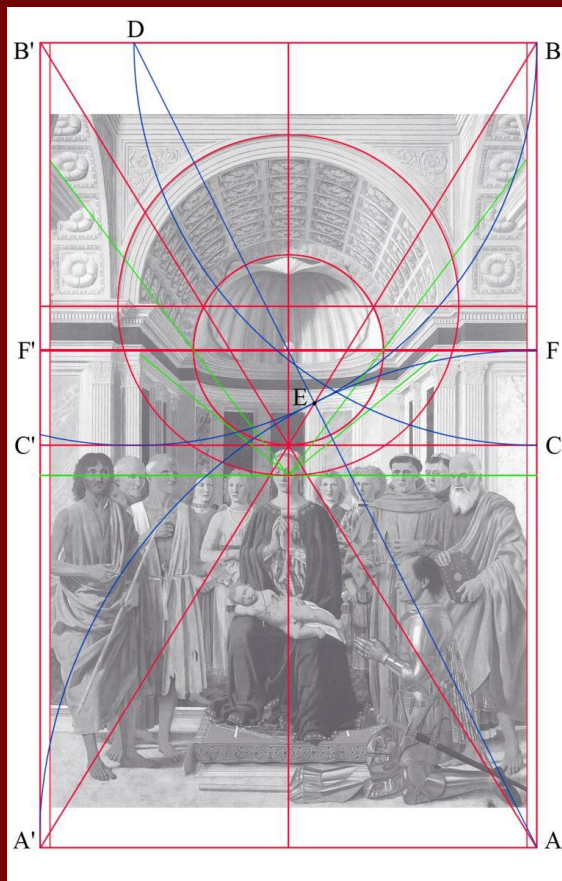
Laurana

Leonardo

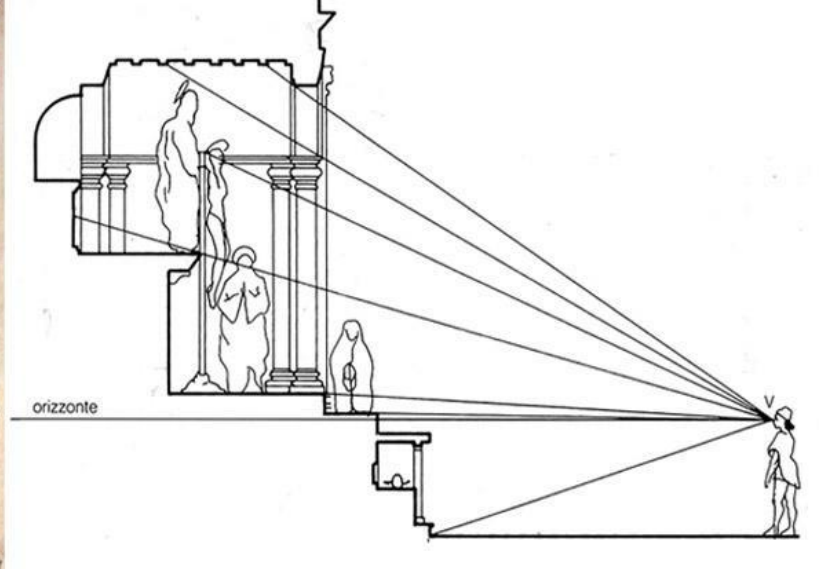
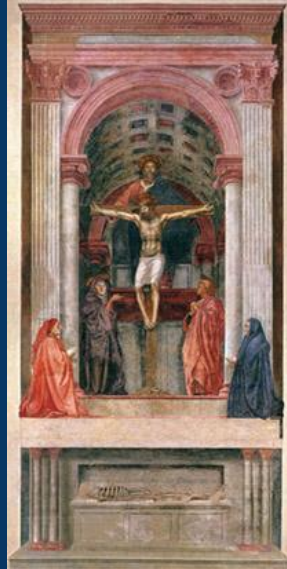
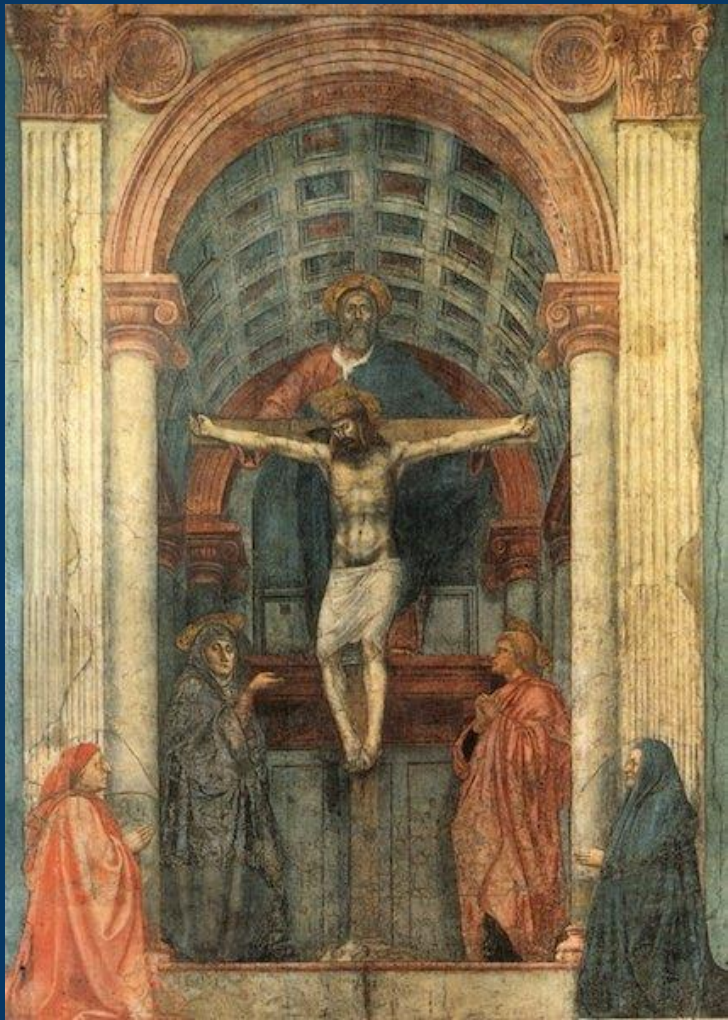


Piero della Francesca - "La flagellazione di Cristo" - Urbino, Galleria Nazionale delle Marche





Piero della Francesca - cd. "Pala di Brera" - Milano, Pinacoteca di Brera

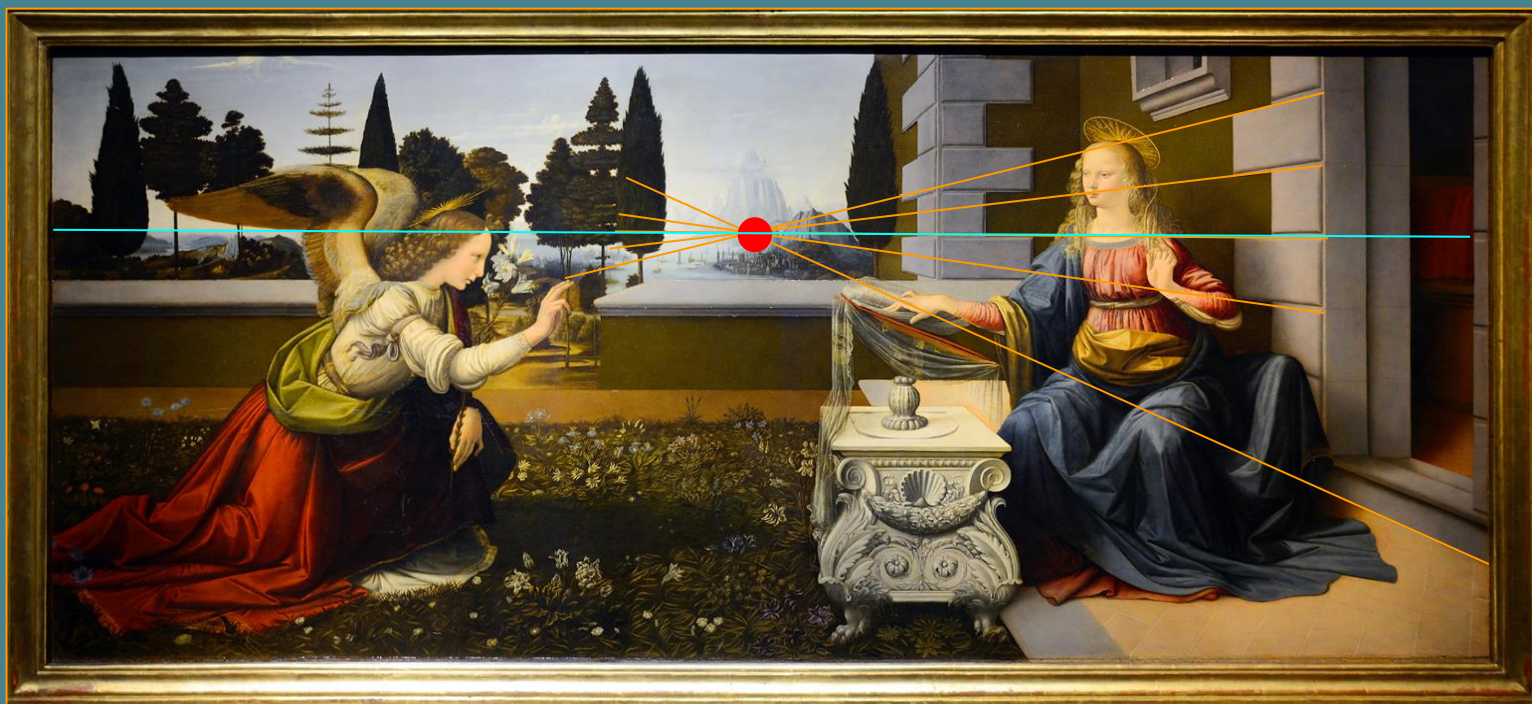


Masaccio, la Trinità - Firenze - Chiesa di Santa Maria Novella



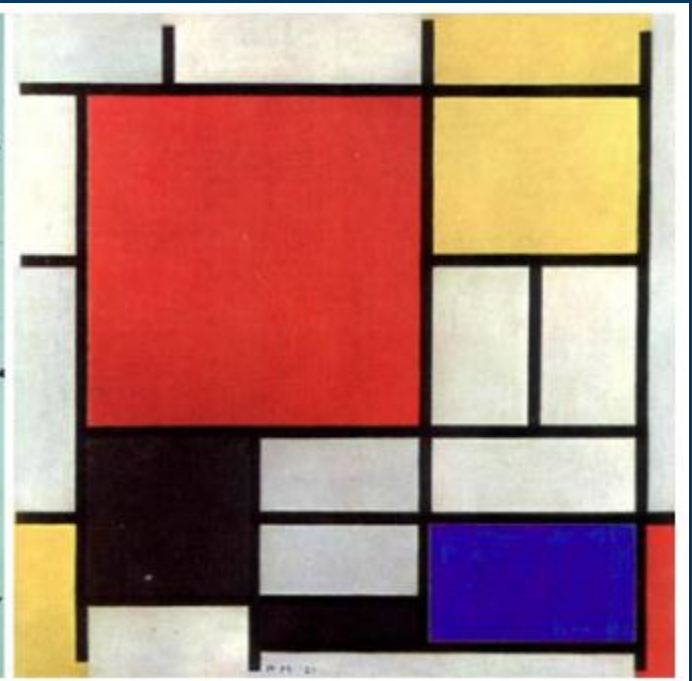
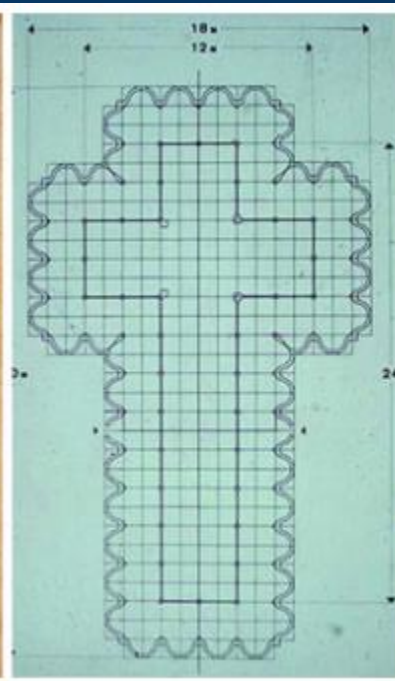
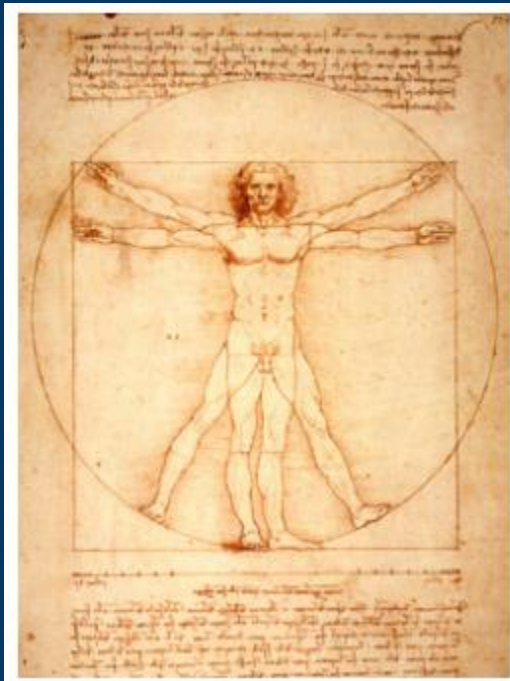


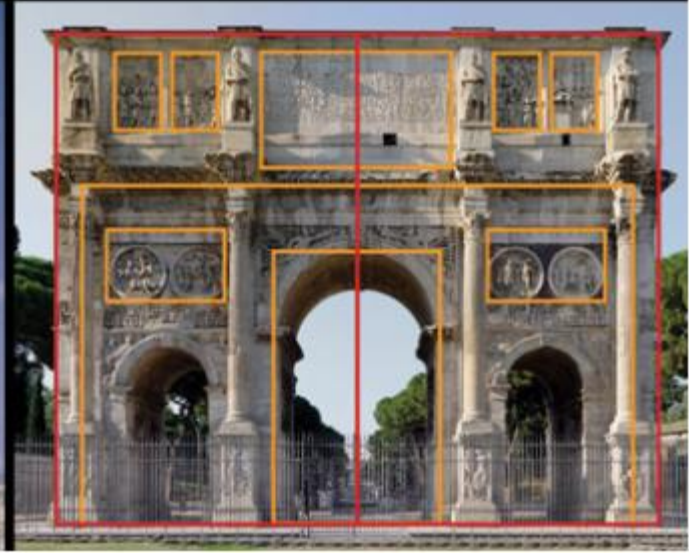
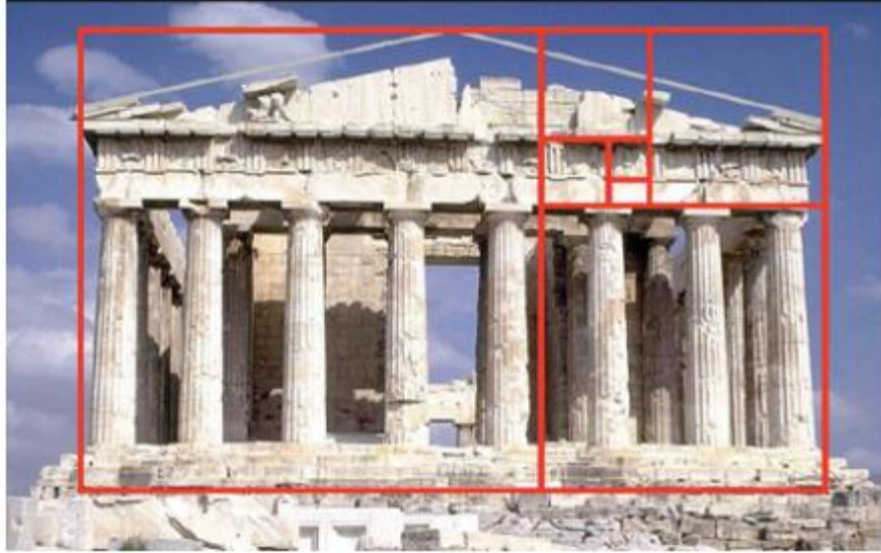
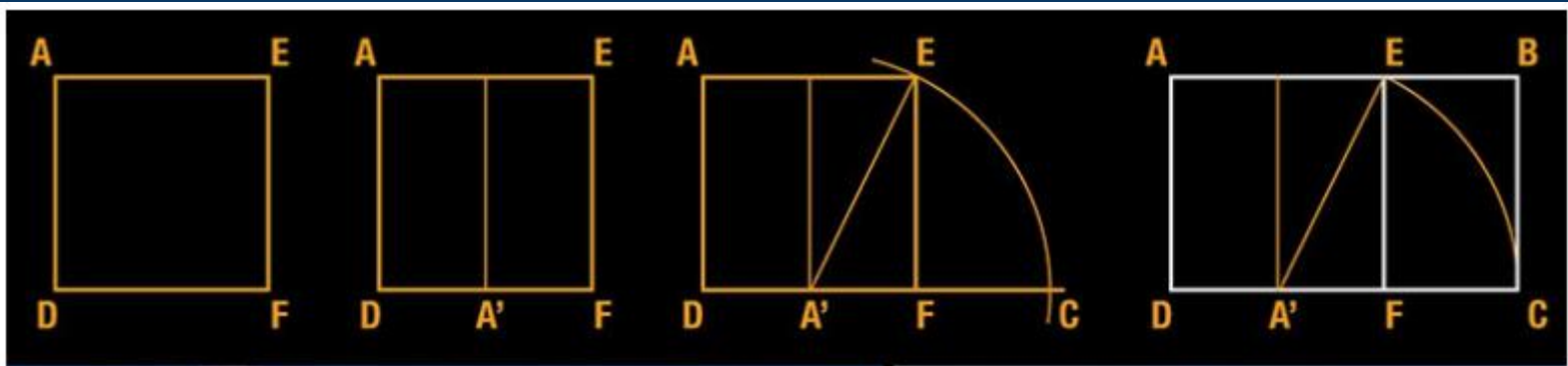
Leonardo Da Vinci, L'Adorazione dei Magi (particolare) - Firenze, Galleria degli Uffizi

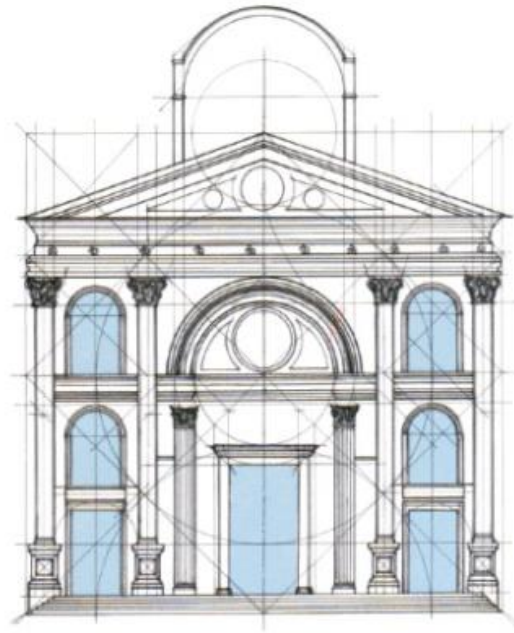
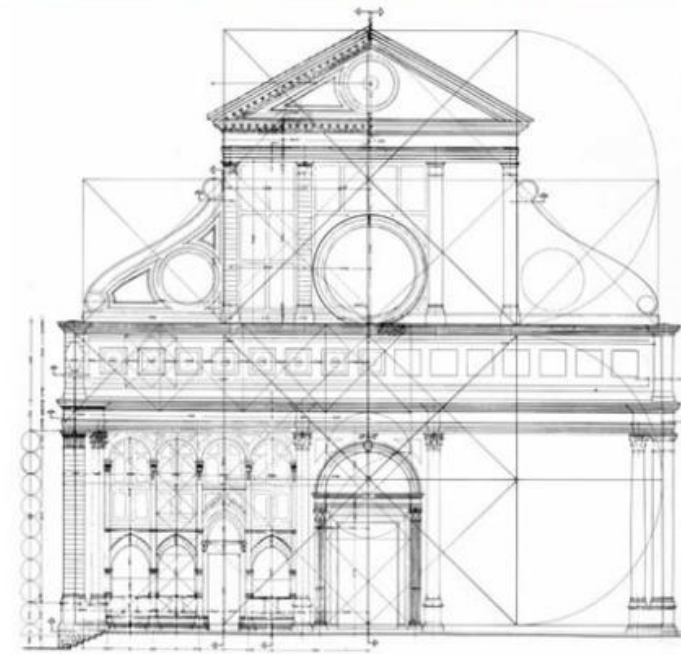
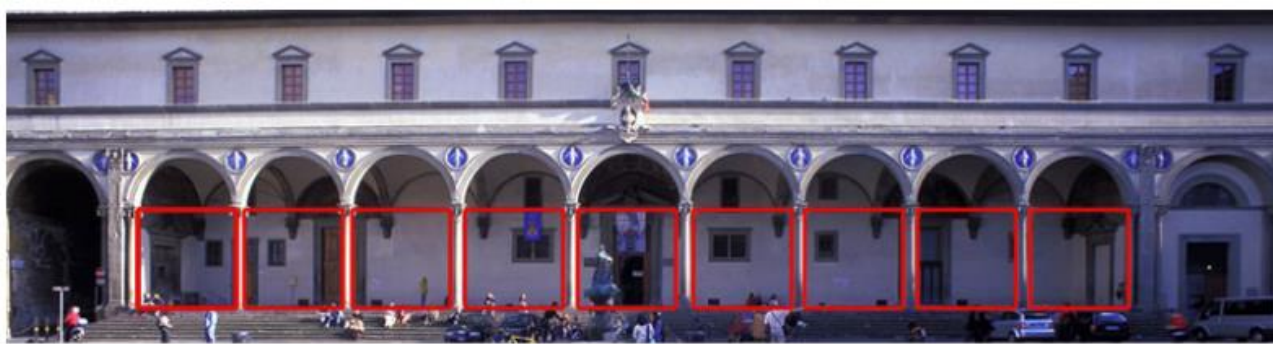


Leonardo Da Vinci, L'Annunciazione - Firenze, Galleria degli Uffizi

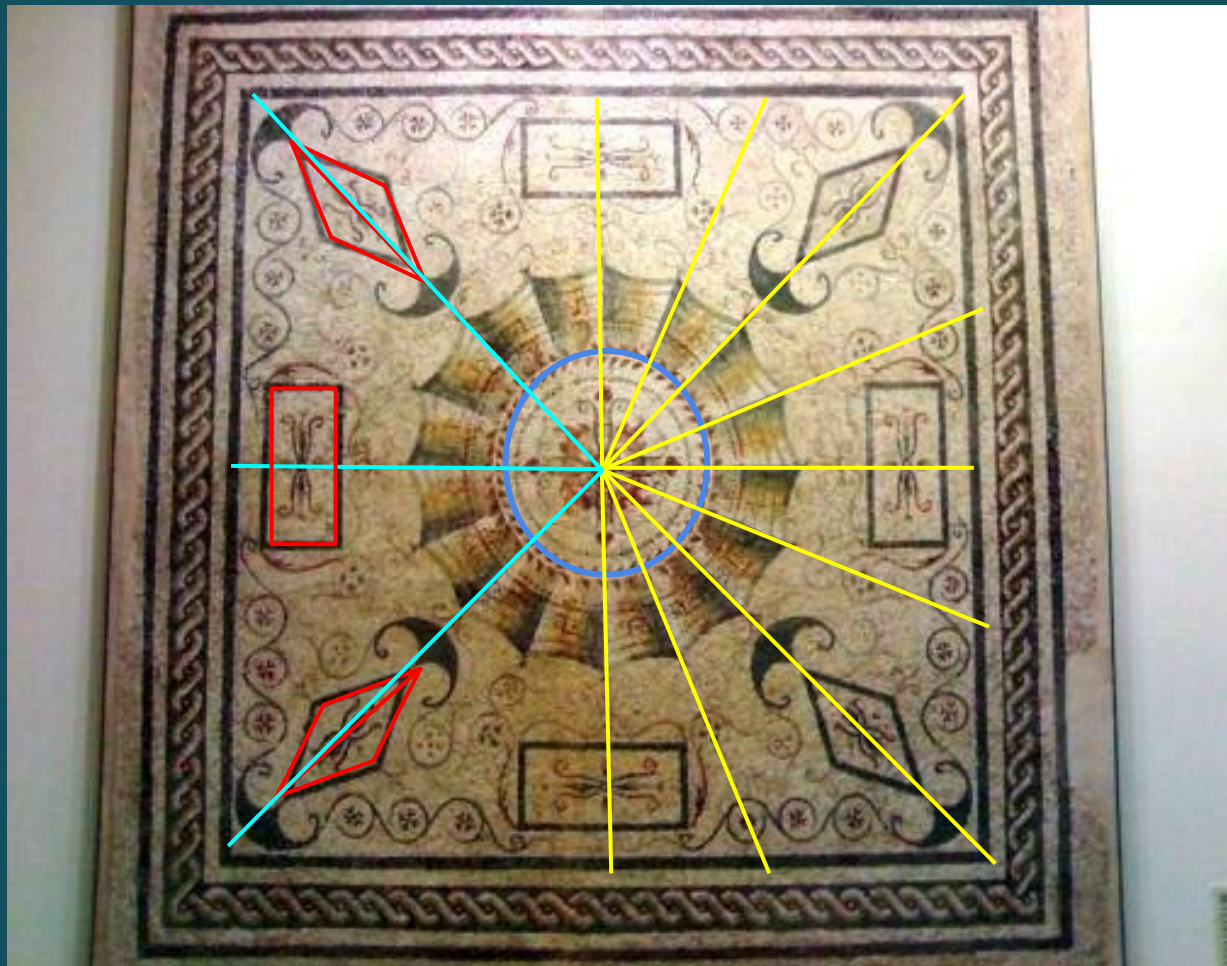
Il fascino della geometria piana

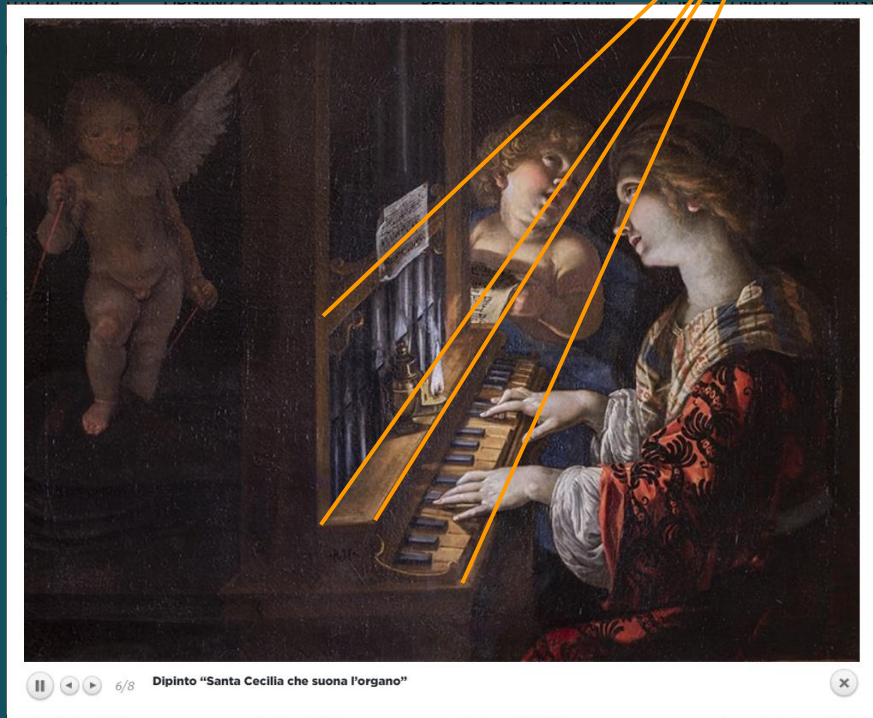




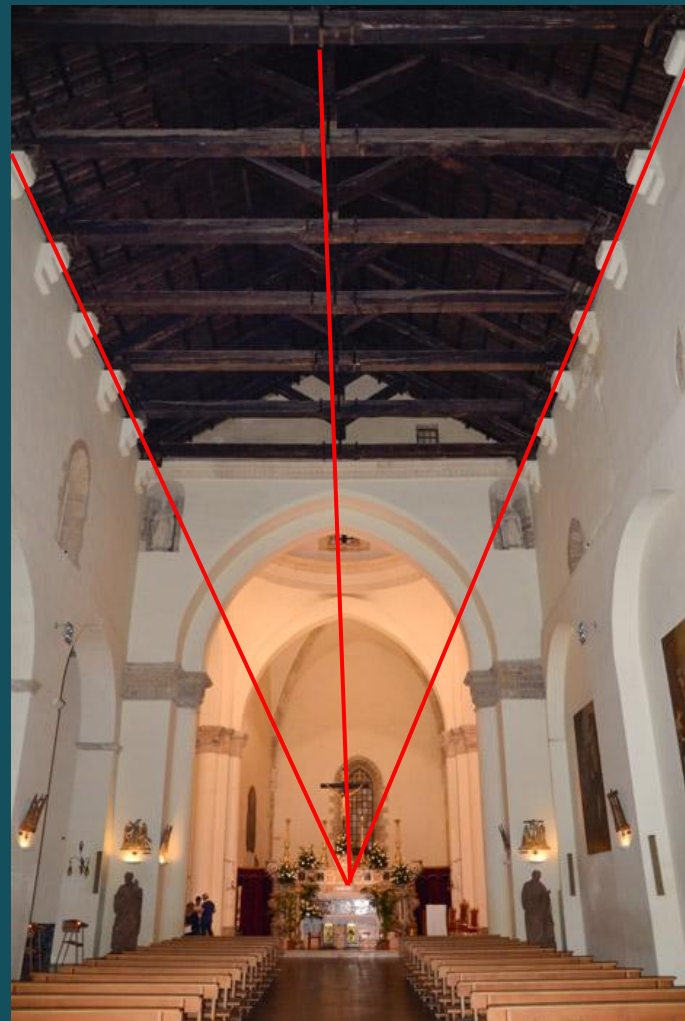


Arte a Km zero

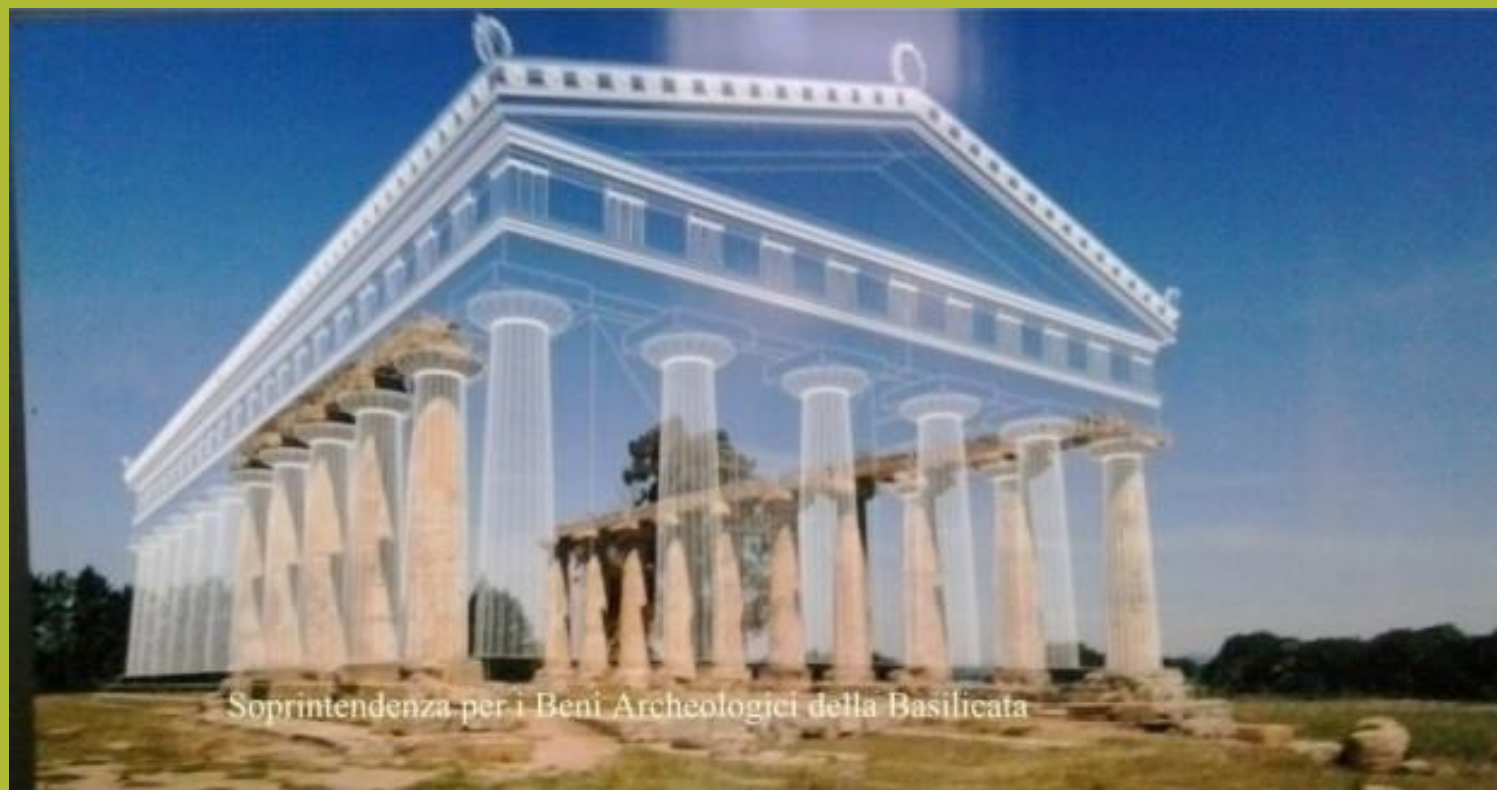








Nuove possibilità per il Disegno Tecnico



coming soon...